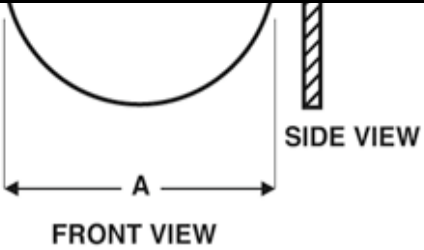
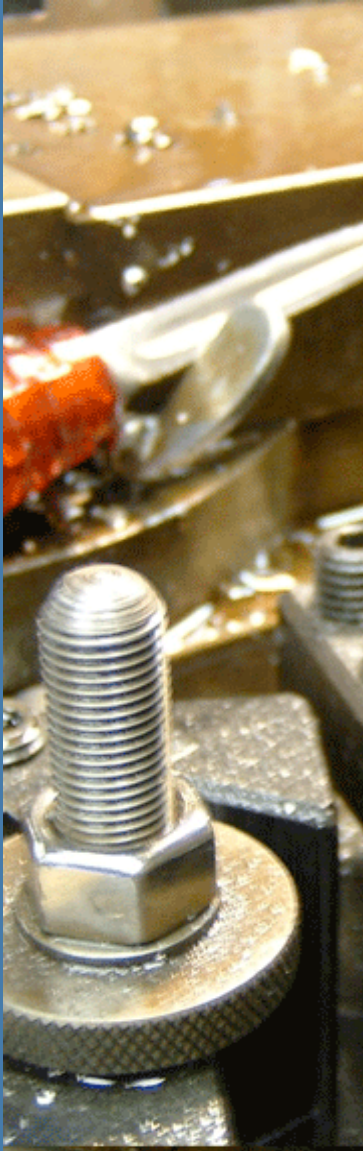


PADDLE PLATES

When Ordering Please Specify:

Line Size, Plate Material, Thickness, Orifice Bore, Quantity.

LINE SIZE	150# ANSI A	300# ANSI A	400# ANSI A	600# ANSI A	900# ANSI A	1500# ANSI A	2500# ANSI A	ALL RATINGS B	ALL RATINGS C	ALL RATINGS E
1/2"	1 7/8"	2 1/8"	2 1/8"	2 1/8"	2 1/2"	2 1/2"	2 3/4"	4"	1"	1/8"
3/4"	2 1/4"	2 5/8"	2 5/8"	2 5/8"	2 3/4"	2 3/4"	3"	4"	1"	1/8"
1"	2 5/8"	2 7/8"	2 7/8"	2 7/8"	3 1/8"	3 1/8"	3 3/8"	4"	1"	1/8"
1 1/4"	3"	3 1/4"	3 1/4"	3 1/4"	3 1/2"	3 1/2"	4 1/8"	4"	1"	1/8"
1 1/2"	3 3/8"	3 3/4"	3 3/4"	3 3/4"	3 7/8"	3 7/8"	4 5/8"	4"	1"	1/8"
2"	4 1/8"	4 3/8"	4 3/8"	4 3/8"	5 5/8"	5 5/8"	5 3/4"	4"	1"	1/8"
2 1/2"	4 7/8"	5 1/8"	5 1/8"	5 1/8"	6 1/2"	6 1/2"	6 5/8"	4"	1"	1/8"
3"	5 3/8"	5 7/8"	5 7/8"	5 7/8"	6 5/8"	6 7/8"	7 3/4"	4"	1"	1/8"
4"	6 7/8"	7 1/8"	7"	7 5/8"	8 1/8"	8 1/4"	9 1/4"	4"	1"	1/8"
5"	7 3/4"	8 1/2"	8 3/8"	9 1/2"	9 3/4"	10"	11"	4"	1"	1/8"
6"	8 3/4"	9 7/8"	9 3/4"	10 1/2"	11 3/8"	11 1/8"	12 1/2"	4"	1"	1/8"
8"	11"	12 1/8"	12"	12 5/8"	14 1/8"	13 7/8"	15 1/4"	4"	1"	1/8"
10"	13 3/8"	14 1/4"	14 1/8"	15 3/4"	17 1/8"	17 1/8"	18 3/4"	5"	1 1/4"	1/4"
12"	16 1/8"	16 5/8"	16 1/2"	18"	19 5/8"	20 1/2"	21 5/8"	6"	1 1/2"	1/4"
14"	17 3/4"	19 1/8"	19"	19 3/8"	20 1/2"	22 3/8"	--	6"	1 1/2"	1/4"
16"	20 1/4"	21 1/4"	21 1/8"	22 1/4"	22 5/8"	25 1/4"	--	6"	1 1/2"	3/8"
18"	21 1/2"	23 3/8"	23 1/4"	24"	25"	27 5/8"	--	6"	1 1/2"	3/8"
20"	23 3/4"	25 5/8"	25 3/8"	26 3/4"	27 3/8"	29 5/8"	--	6"	1 1/2"	1/2"



For use with standard raised-face orifice flange unions.

Standard construction materials are 304SS and 316SS with other materials available as required.

Kelley® Orifice Plate handles are marked with line size and flange rating, bore, material and inlet. Tag numbers, serial numbers, etc. can also be added..

